

WALK AUDIT



WHILE WALKING
AROUND THE
NEIGHBORHOOD,
IDENTIFY PROBLEM
AREAS AND RECORD
ON THIS SURVEY AND
ON THE MAP HANDOUT

1



MAKE YOUR
NEIGHBORHOOD MORE
ENJOYABLE BY USING
SHORT-TERM AND
LONG-TERM
IMPROVEMENTS ON
LAST PAGE

2



DISCUSS PROBLEMS
AND SOLUTIONS FROM
THIS AUDIT WITH
STUDENTS, FAMILY,
AND COMMUNITY
LEADERS

3

HOW WALKABLE IS YOUR NEIGHBORHOOD? LET'S FIND OUT WITH A

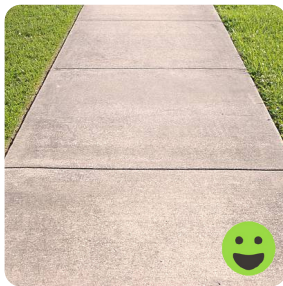
WALK AUDIT

DIRECTIONS

Print a copy of this checklist along with a map of your route. Fill out the checklist to note problems on your walk. You may use the checklist either for each block you walk, or for your entire route. Place a 'x' on the checklist to any problem and note the location of the problem on your map. Explain problem on your map.

VISUALS

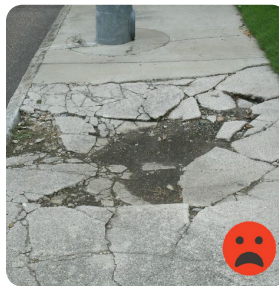
Below are examples of high to low quality sidewalks.



like new



cracked sidewalks



dangerous sidewalks

EXAMPLE AUDIT

1. SIDEWALKS

- ☐ No sidewalks or paths
- ☒ Sidewalks are broken, cracked, or have trip hazards
- ☒ Sidewalks are blocked by overgrown landscaping, poles, signs, plants, vehicles, etc.
- ☐ Sidewalk is not continuous
- ☒ Sidewalk is not wide enough (two people cannot easily walk together side by side)
- ☐ Sidewalk has nothing separating it from the street (grass, trees, parked cars)
- ☐ Other problems: The sidewalks were really muddy and hard to walk on

OVERALL, THE QUALITY AND SAFETY OF SIDEWALKS IS: 😡 😞 😐 😊 😄



1. SIDEWALKS

- ☐ No sidewalks or paths
- ☐ Sidewalks are broken, cracked, or have trip hazards
- ☐ Sidewalks are blocked by overgrown landscaping, poles, signs, plants, vehicles, etc.
- ☐ Sidewalk is not continuous
- ☐ Sidewalk is not wide enough (two people cannot easily walk together side by side)
- ☐ Sidewalk has nothing separating it from the street (grass, trees, parked cars)
- ☐ Other problems: _____

OVERALL, THE QUALITY AND SAFETY OF SIDEWALKS IS:



2. STREET CROSSINGS AND INTERSECTIONS:

- ☐ The road is too wide to cross easily
- ☐ Traffic signals do not give enough time to cross the street
- ☐ The crossing does not have a pedestrian-activated button
- ☐ There is no crosswalk or it is poorly marked
- ☐ The crosswalk is well-placed and safe
- ☐ The physical roadway is in good condition and forces drivers to slow down
- ☐ Intersection does not have a curb ramp for carts, wheelchairs, strollers, walkers, etc.
- ☐ There is a dedicated school zone sign
- ☐ Other problems: _____

OVERALL, THE QUALITY AND SAFETY OF
STREET CROSSINGS AND INTERSECTIONS IS:



3. DRIVER BEHAVIOR:

- ☐ Drivers do not stop at stop signs or stop behind the crosswalk
- ☐ Drivers appear to be speeding
- ☐ Drivers do not yield to people walking
- ☐ Drivers are distracted (on the phone, texting, paying attention to passengers rather than road)
- ☐ Drivers aren't looking out for people walking, make unexpected turns, or seem hostile
- ☐ Other problems: _____

OVERALL, THE QUALITY AND SAFETY OF DRIVER BEHAVIOR IS:



4. SAFETY:

- ☐ Car speeds are too fast
- ☐ There's too much traffic
- ☐ Street lights are few or not present
- ☐ My personal safety feels threatened along the walk, including seeing or experiencing street harassment
- ☐ Unleashed dogs or other loose intimidating animals are present
- ☐ There is a lack of eyes on the street (e.g., absence of people, no houses or store fronts)
- ☐ Law enforcement is/is not present (circle)
- ☐ Other problems: _____

OVERALL, THE FEELING OF SAFETY IN THIS AREA IS:     

5. COMFORT:

- ☐ There is not enough shade from canopies, awnings, or trees
- ☐ There are few or no street trees or other landscaping
- ☐ There are vacant lots or rundown buildings
- ☐ The street needs benches and places to rest
- ☐ Other problems: _____

OVERALL, THE COMFORT AND APPEAL IN THIS AREA IS:     

6. NEIGHBORHOOD APPEARANCE:

- ☐ There is vandalism (e.g., damaged signs, vehicles, etc.)
- ☐ There is excessive litter (e.g., noticeable amounts of trash, broken glass, etc.)
- ☐ Abandoned buildings or poorly maintained properties
- ☐ There are parts of the park that feel isolated and hidden from view
- ☐ Other problems: _____

OVERALL, THE NEIGHBORHOOD APPEARANCE IS:     

7. SURROUNDING LAND USES

- ☐ Lots of driveways
- ☐ Industrial areas
- ☐ Walk up commercial uses (stores, coffee shops, convenience stores, etc.)
- ☐ My personal safety feels threatened along the walk, including seeing or experiencing street harassment
- ☐ Parks or recreational areas
- ☐ Other problems: _____

OVERALL, THE FEELING OF SAFETY IN THIS AREA IS:



8. LIGHTING:

- ☐ Imagine nighttime conditions, would it be comfortable in the evening?
- ☐ In the morning?
- ☐ Can you see someone walking down the street towards you?
- ☐ Can you see approaching vehicles or bicycles?
- ☐ Other problems: _____

OVERALL, THE COMFORT AND APPEAL IN THIS AREA IS:



ADDITIONAL COMMENTS:

IMPROVE YOUR COMMUNITY

1. SIDEWALK ISSUES

Sidewalks or paths started and stopped
Sidewalks broken or cracked
Sidewalks blocked
No sidewalks, paths or shoulders
Too much traffic

WHAT YOU CAN DO IMMEDIATELY

- pick another route for now
- tell local traffic engineering or public works department about specific problems and provide a copy of the checklist

WHAT YOU AND YOUR COMMUNITY CAN DO WITH MORE TIME

- speak up at board meetings
- write or petition city for walkways and gather neighborhood signatures
- make media aware of problem
- work with a local transportation engineer to develop a plan for a safe walking route

2. STREET CROSSING AND INTERSECTION ISSUES

Road too wide
Traffic signals made us wait too long or did not give us enough time to cross
Crosswalks/traffic signals needed
View of traffic blocked by parked cars, trees, or plants
Needed curb ramps or ramps needed repair

- pick another route for now
- share problems and checklist with local traffic engineering or public works department
- trim your trees or bushes that block the street and ask your neighbors to do the same
- leave nice notes on problem cars asking owners not to park there

- push for crosswalks/signals/parking changes/curb ramps at city meetings
- report to traffic engineer where parked cars are safety hazards
- report illegally parked cars to the police
- request that the public works department trim trees or plants
- make media aware of problem

3. DRIVER ISSUES

Backed without looking
Did not yield
Turned into walkers
Drove too fast
Sped up to make traffic lights or drove through red lights

- pick another route for now
- set an example: slow down and be considerate of others
- encourage your neighbors to do the same
- report unsafe driving to the police

- request protected turns
- ask city planners and traffic engineers for traffic calming ideas
- ask schools about getting crossing guards at key locations
- organize a neighborhood speed watch program

4. SAFETY ISSUES

Cross at crosswalks or where you could see and be seen
Stop and look left, right, left before crossing
Walk on sidewalks or shoulders facing traffic
Cross with the light

- educate yourself and your child about safe walking
- organize parents in your neighborhood to walk children to school

- encourage schools to teach walking safely
- help schools start safe walking programs
- encourage corporate support for flex schedules so parents can walk children to school

5. COMFORT & PARK ISSUES

Needs grass, flowers, trees
Scary dogs
Scary people
Not well lit
Dirty, litter
Lots of traffic

- point out areas to avoid to your child; agree on safe routes
- ask neighbors to keep dogs leashed or fenced
- report scary dogs to the animal control department
- report scary people to the police
- report lighting needs to the police or appropriate public works department
- take a walk with a trash bag
- plant trees, flowers in your yard
- select alternative route with less traffic

- start a crime watch program in your neighborhood
- organize a community clean-up day
- sponsor a neighborhood beautification or tree-planting day
- begin an adopt-a-street program
- initiate support to provide routes with less traffic to schools in your community (reduced traffic during